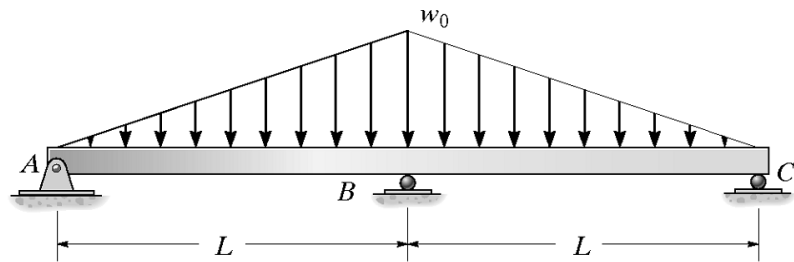


Name:

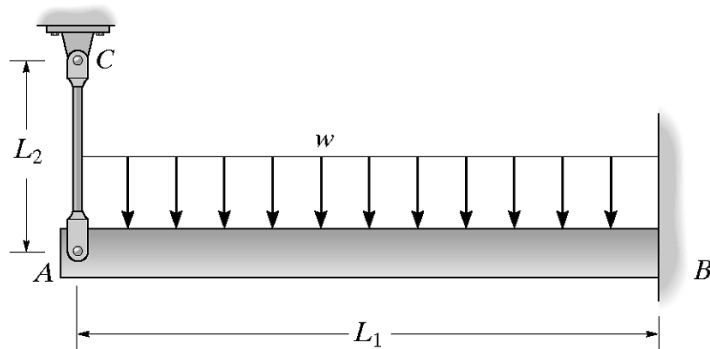
Student ID:

M18: Statically Indeterminate Problems - Beams

1. Determine the reactions at the supports, then draw the shear and moment diagrams. EI is constant.



2. The beam has a constant E_1I_1 and is supported by the fixed wall at B and the rod AC. If the rod has a cross-sectional area A_2 and the material has a modulus of elasticity E_2 , determine the force in the rod.

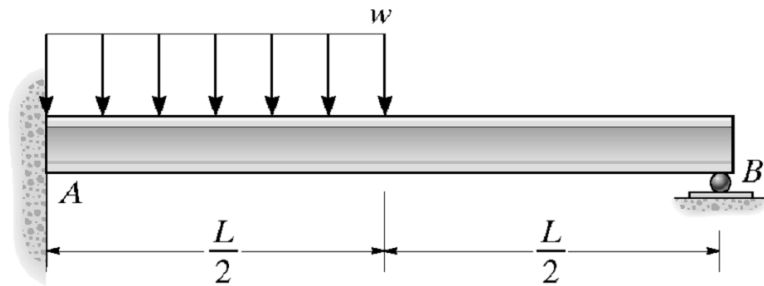


Name:

Student ID:

M18: Statically Indeterminate Problems - Beams

3. Determine the reactions at the supports A and B . EI is constant.



4. The beam is supported by a pin at A , a spring having a stiffness k at B , and a roller at C . Determine the force the spring exerts on the beam. EI is constant.

