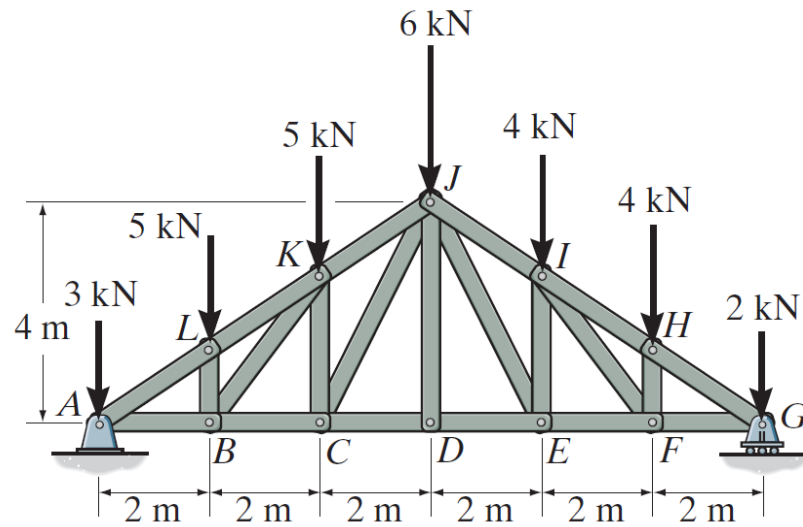


3. Determine the force in members KJ , KC and BC of the *Howe* truss, and state if the members are in tension or compression. 【试求图示 *Howe* 屋顶桁架中杆 KJ , KC , 和 BC 中的内力, 并指明是受拉还是受压。】



4. Determine the horizontal and vertical components of reaction that the pins A and B exert on the two-member frame. Set $F = 0$. 【试求图示两杆刚架在铰接点 A 和 B 处所受的水平 and 竖直反作用力。设 $F = 0$ 。】

